

CERVICAL FUSION
CAGE
SYSTEM

BEST TREATMENT BRINGS WONDERFUL LIVES

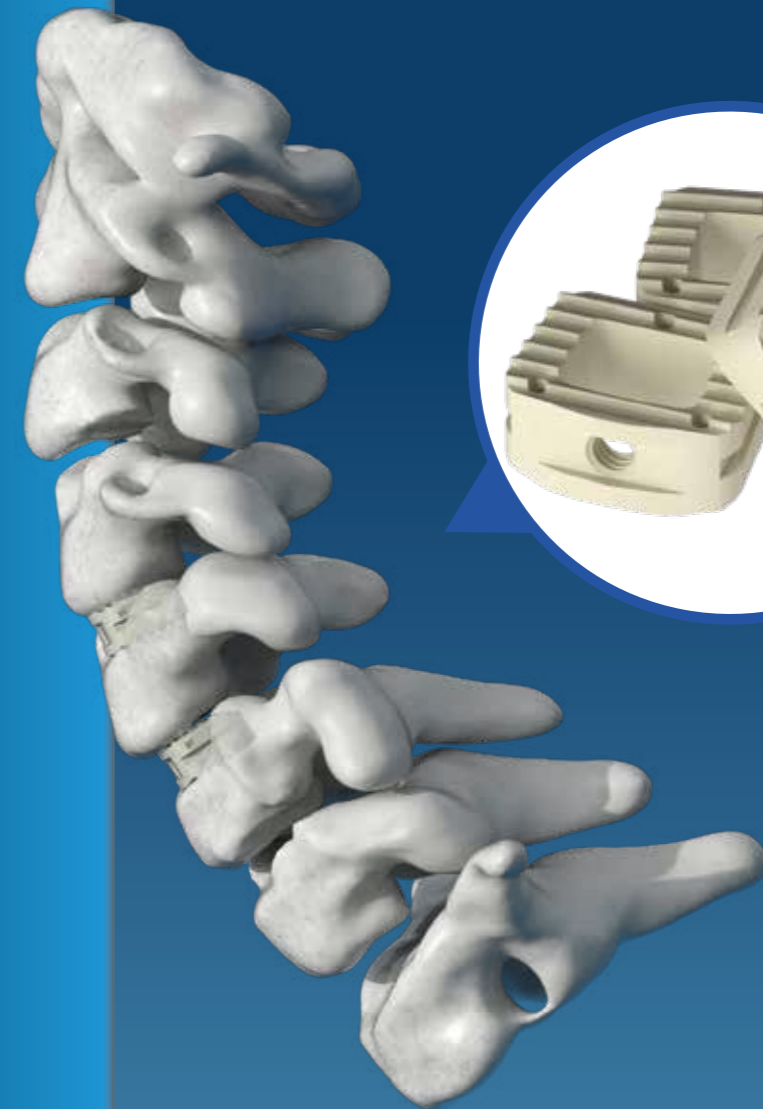
Betta Medical Technology (Wuxi) Co., Ltd.



Add : Zone B, 1st Floor of No.7 Building
Area C, No.1699 Huishan Ave Huis-
han Economic Development Zone
214174 Wuxi, Jiangsu Province
PEOPLE'S REPUBLIC OF CHINA

Tel: +86-510-83588388

CERVICAL FUSION
CAGE
SYSTEM



The Sample Picture is Only For Reference, Please Take Practicality As Standard

Introduction

For lesions of the cervical spine that require segmental fusion

Degenerative disc disease and spinal instability

Revision surgery after simple discectomy

It is not recommended to be used alone, it should be used in conjunction with the anterior cervical plate system



Indications

- Surface denticles, providing initial stability after implantation
- Convex design for endplate anatomy
- Sufficient bone graft space
- Development line for easy image observation

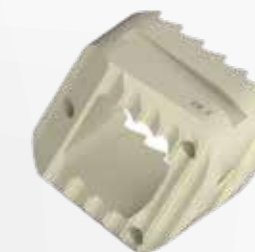
Features & Benefits

- Using PEEK material, a variety of models and specifications are available
- Convex design conforms to the physiological curvature of the endplate
- Tantalum metal developing line, easy to observe
- Large bone graft window
- Surface anti-backward design
- Blunt tip design for easy implantation

Implants Ordering Information

Cervical Intervertebral Cage

P/N	Description(mm)	Material
31600511	14×11×5	PEEK
31600611	14×11×6	PEEK
31600711	14×11×7	PEEK
31600811	14×11×8	PEEK
31600911	14×11×9	PEEK
31600011	14×11×10	PEEK
31600111	14×11×11	PEEK
31600211	14×11×12	PEEK



Instruments Ordering Information

Cervical Intervertebral Cage Instrument Set 61110000

P/N	Description	Quantity	P/N	Description	Quantity
61110100	Distracor	1	61111500	Measuring Block,8	1
61110200	Bone File	11	61111600	Measuring Block,9	1
61110300	Insertor	11	61111700	Measuring Block,10	1
61110400	Curette,5	11	61111800	Measuring Block,11	1
61110500	Curette,6	1	61111900	Measuring Block,12	1
61110600	Curette,7	1	61112000	Implant support	1
61110700	Curette,8	1	61112100	Insertor I	1
61110800	Curette,9	1	61112200	Insertor II	1
61110900	Curette,10	1	61112300	Graft Impactor	1
61111000	Curette,11	1	61112400	Cage Holder	1
61111100	Curette,12	1	61112500	Distraction Pin Driver	1
61111200	Measuring Block,5	1	61112600	Distraction Pin	1
61111300	Measuring Block,6	1	61112700	Quick Connect Handle	1
61111400	Measuring Block,7	1	61112800	Instrument Box	1